



Musée national d'histoire naturelle  
Luxembourg

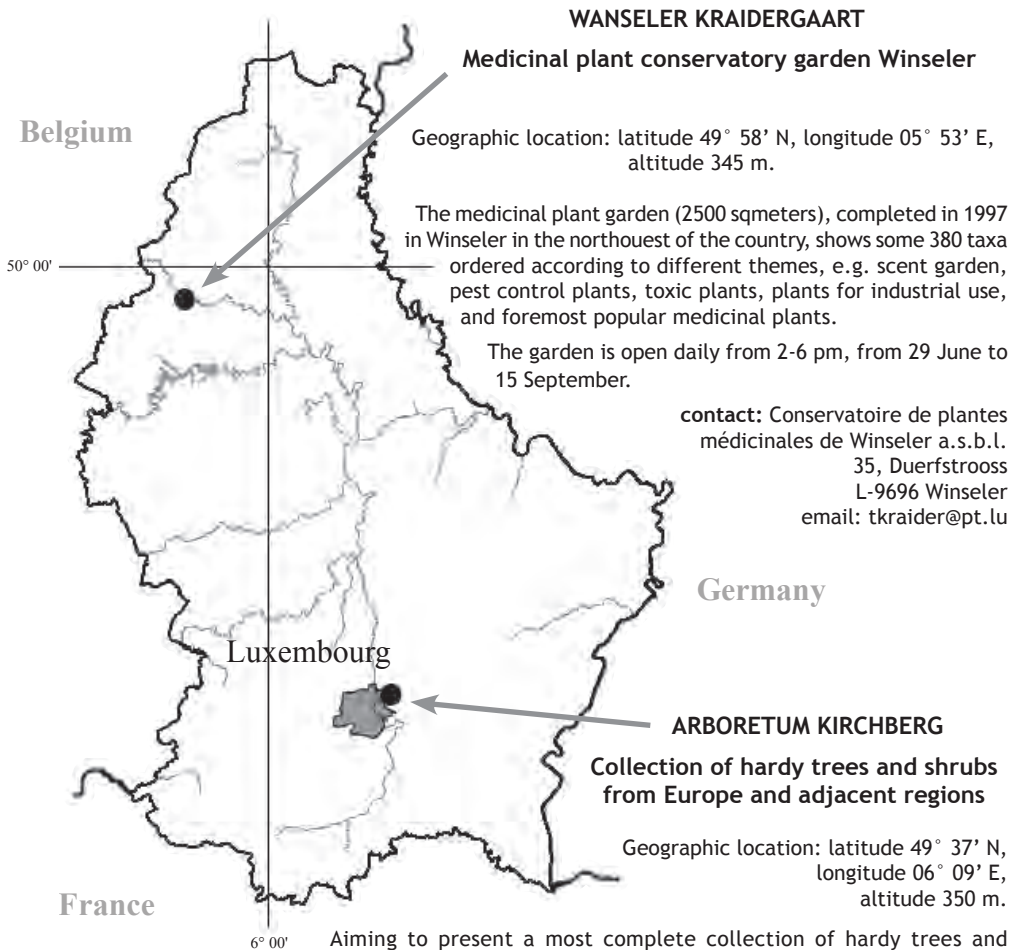
## Index Seminum 2010

Seeds collected in 2009 and 2010  
offered for exchange by

### ARBORETUM KIRCHBERG



<http://www.mnhn.lu/arboretum>



### WANSELER KRAIDERGAART

#### Medicinal plant conservatory garden Winseler

Geographic location: latitude 49° 58' N, longitude 05° 53' E, altitude 345 m.

The medicinal plant garden (2500 sqmeters), completed in 1997 in Winseler in the northouest of the country, shows some 380 taxa ordered according to different themes, e.g. scent garden, pest control plants, toxic plants, plants for industrial use, and foremost popular medicinal plants.

The garden is open daily from 2-6 pm, from 29 June to 15 September.

**contact:** Conservatoire de plantes médicinales de Winseler a.s.b.l.  
35, Duerfstrooss  
L-9696 Winseler  
email: tkraider@pt.lu

### Germany

### Luxembourg

### ARBORETUM KIRCHBERG

#### Collection of hardy trees and shrubs from Europe and adjacent regions

Geographic location: latitude 49° 37' N, longitude 06° 09' E, altitude 350 m.

Aiming to present a most complete collection of hardy trees and shrubs from Europe, the arboretum, initiated in 1993 by the public *Fonds d'Urbanisation et d'Aménagement du Plateau de Kirchberg* right to the northeast of the city of Luxembourg, consists of 3 main sites with a total area of nearly 30 ha, open to public throughout the year.

**contact:** Thierry Helminger Musée national d'histoire naturelle  
Living plant collections  
25 rue Münster  
L-2160 Luxembourg  
tel +352 46 22 40 201, fax +352 46 38 48, email:arboretum@mnhn.lu

**Climatic data:** Luxembourg's climate is temperate and humid, the average yearly mean temperature is 9.0 °C, the average yearly precipitation is 782.2 mm (1951-1990, STATEC). Average number of frost days per year: 89

Average mean monthly values for temperature and precipitation  
(Luxembourg-Findel, 1961-1990)

C°	J	F	M	A	M	J	J	A	S	O	N	D
mm	0	1.1	4	7.5	11.8	14.9	16.9	16.4	13.4	9.1	3.8	1
	71.2	61.7	70	61.2	81.2	82.2	68.4	72.3	70	74.6	83.2	79.6

**Regulations on the exchange of living plant material:**

As part of their commitment to implement the provisions of the International Convention on Biological Diversity (Rio de Janeiro, 1992), especially article 15 (access to genetic resources), the Musée national d’histoire naturelle in Luxembourg is a member of the International Plant Exchange Network (IPEN) and provides plant material only in accordance with the IPEN Code of Conduct. The full text of the Code can be found at <http://www.mnhn.lu/arboretum>

**Therefore our gardens can only supply plant material to non IPEN-members after reception of the bilateral Material Transfer Agreement signed a by an entitled representant of the recieving institution.**

IPEN members don't need to sign the Material Transfer Agreement. (see list at <http://www.bgci.org/resources/ipen>)

The IPEN number given with the seed names consists of the following positions:

AA-0-LUX-9999-999

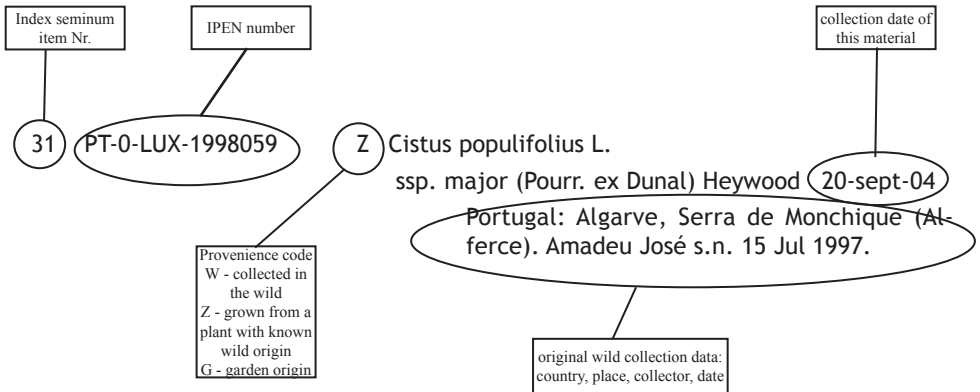
AA = ISO country code of the country of origin of this plant material, XX = unknown

0 = no special restrictions regarding exchange (or 1 if there are such restrictions)

LUX = abbreviation of our institution

9999-999 (or 9999/AA/999) = our accession number

**The IPEN number as a whole must always stay attached to the accession and its descendants so that the origin of the material can always be traced back!**



## SEED LIST 2010

1	<p><i>Achillea millefolium</i> L. Luxembourg: Obenthal - Hourescht, bord chemin rural. Glesener Bob 1 Oct 2010.</p>	LU-0-LUX-2010-128	W
2	<p><i>Achillea nobilis</i> L. Luxembourg: Esch-Alzette: Burbacher Lach. Steinbach Corinne 7 Aug 2009.</p>	LU-0-LUX-2010-003	W
3	<p><i>Achillea nobilis</i> L. Luxembourg: Esch-Alzette: Eisekaul. Steinbach Corinne 9 Sep 2009.</p>	LU-0-LUX-2010-001	W
4	<p><i>Achillea nobilis</i> L. Luxembourg: Esch-Alzette: Kazeberg. Steinbach Corinne 15 Sep 2009.</p>	LU-0-LUX-2010-002	W
5	<p><i>Achillea ptarmica</i> L. Luxembourg: Wincrange - Ramëscher, GK 61652/125595. Owaller Marc 9 Sep 2010.</p>	LU-0-LUX-2010-074	W
6	<p><i>Anthyllis vulneraria</i> L. Luxembourg: Eischen - Jongebësch. Steinbach Corinne 3 Aug 2010.</p>	LU-0-LUX-2010-075	W
7	<p><i>Artemisia vulgaris</i> L. Luxembourg: Obenthal - Hourescht, bord chemin rural. Glesener Bob 1 Oct 2010.</p>	LU-0-LUX-2010-118	W
8	<p><i>Berberis vulgaris</i> L. Luxembourg: Imbringen: Amberknepchen. Helminger Thierry 24 Aug 2009.</p>	LU-0-LUX-2010-037	W
9	<p><i>Berberis vulgaris</i> L. Luxembourg: Lellingen - Op Baerel/Planzewee. Owaller Marc 1 Jul 2010.</p>	LU-0-LUX-2010-076	W
10	<p><i>Berberis vulgaris</i> L. Luxembourg: Lorentzweiler - Beddelbësch. Owaller Marc 23 Sep 2010.</p>	LU-0-LUX-2010-077	W
11	<p><i>Briza media</i> L. Luxembourg: Imbringen: Amberknepchen. Helminger Thierry 24 Aug 2009.</p>	LU-0-LUX-2010-042	W
12	<p><i>Calendula arvensis</i> L. Luxembourg: Ehnen - vignes en bord de la route N10. Owaller Marc 10 Sep 2010.</p>	LU-0-LUX-2010-078	W
13	<p><i>Carlina vulgaris</i> L. Luxembourg: Imbringen: Amberknepchen. Helminger Thierry 24 Aug 2009.</p>	LU-0-LUX-2010-040	W
14	<p><i>Centaurea cyanus</i> L. Luxembourg: Sandweiler: Heed. Owaller Marc 18 Aug 2009.</p>	LU-0-LUX-2010-004	W
15	<p><i>Centaureum erythraea</i> Rafn Luxembourg: Oberanven - Aarnescht. Steinbach Corinne 10 Aug 2010.</p>	LU-0-LUX-2010-079	W
16	<p><i>Cirsium vulgare</i> (Savi) Ten. Luxembourg: Obenthal - Hourescht, bord chemin rural. Glesener Bob 1 Oct 2010.</p>	LU-0-LUX-2010-125	W
17	<p><i>Colchicum autumnale</i> L. Luxembourg: Nommern - Bakes. Glesener Bob 9 Jul 2010.</p>	LU-0-LUX-2010-080	W
18	<p><i>Corynephorus canescens</i> (L.) P.Beauv. Luxembourg: Eischen - Jongebësch - 15 panicles. Steinbach Corinne 3 Aug 2010.</p>	LU-0-LUX-2010-081	W
19	<p><i>Cytisus scoparius</i> (L.) Link Luxembourg: Colmar-Berg: Roudekapp. Yvan H. 20 Jul 2009.</p>	LU-0-LUX-2010-008	W
20	<p><i>Daucus carota</i> L. Luxembourg: Obenthal - Hourescht, bord chemin rural. Glesener Bob 1 Oct 2010.</p>	LU-0-LUX-2010-127	W
21	<p><i>Dianthus armeria</i> L. Luxembourg: Bockholtz - Leischend, pâturage. Glesener Bob 1 Oct 2010.</p>	LU-0-LUX-2010-121	W
22	<p><i>Dianthus armeria</i> L. Luxembourg: Michelau - Rémertsbiërg, bord route. Glesener Bob 3 Oct 2010.</p>	LU-0-LUX-2010-129	W
23	<p><i>Dianthus deltoides</i> L. Luxembourg: Brameschhaff/Kehlen: Viischte Knapp. Steinbach Corinne 8 Oct 2009.</p>	LU-0-LUX-2010-009	W
24	<p><i>Dianthus deltoides</i> L. Luxembourg: Bockholtz - Leischend, pâturage. Glesener Bob 1 Oct 2010.</p>	LU-0-LUX-2010-122	W

25	<i>Echium vulgare</i> L. Luxembourg: Urspelt - Talus CFL, 5 plants. Owaller Marc 23 Sep 2010.	LU-0-LUX-2010-082	W
26	<i>Epilobium angustifolium</i> L. Luxembourg: Obenthalt - Hourescht, bord chemin forestier. Glesener Bob 1 Oct 2010.	LU-0-LUX-2010-124	W
27	<i>Epipactis palustris</i> (L.) Crantz Luxembourg: Junglinster - Godbrange, Weier, 50 seed pods. Steinbach Corinne 10 Aug 2010.	LU-0-LUX-2010-083	W
28	<i>Eriophorum angustifolium</i> Honck. Luxembourg: Junglinster - Godbrange, Weier. Owaller Marc 30 Jun 2010.	LU-0-LUX-2010-084	W
29	<i>Eriophorum latifolium</i> Hoppe Luxembourg: Junglinster - Godbrange, Weier. Owaller Marc 30 Jun 2010.	LU-0-LUX-2010-085	W
30	<i>Euonymus europaea</i> L. Luxembourg: Basbellain: Cornelysmillen - Talus CFL. Owaller Marc 23 Sep 2010.	LU-0-LUX-2010-086	W
31	<i>Filipendula ulmaria</i> (L.) Maxim. Luxembourg: Liefrange - bord étang. Glesener Bob 3 Oct 2010.	LU-0-LUX-2010-120	W
32	<i>Genista pilosa</i> L. Luxembourg: Huldange, chemin à la frontière. Owaller Marc 20 Jul 2010.	LU-0-LUX-2010-087	W
33	<i>Gentianella germanica</i> (Willd.) E.F.Warb. Luxembourg: Nommern: Bakes. Steinbach Corinne 7 Oct 2009.	LU-0-LUX-2010-012	W
34	<i>Gentianella germanica</i> (Willd.) E.F.Warb. Luxembourg: Helmsange: Sonneberg / Gipskaul. Steinbach Corinne 8 Oct 2009.	LU-0-LUX-2010-011	W
35	<i>Gentianella germanica</i> (Willd.) E.F.Warb. Luxembourg: Ernster: Wuerzelswiss. Steinbach Corinne 14 Oct 2009.	LU-0-LUX-2010-010	W
36	<i>Jasione montana</i> L. Luxembourg: Urspelt: Rocher CFL, 2 individuals. Owaller Marc 23 Sep 2010.	LU-0-LUX-2010-088	W
37	<i>Juncus articulatus</i> L. Luxembourg: Junglinster - Godbrange, Weier. Owaller Marc 9 Jul 2010.	LU-0-LUX-2010-089	W
38	<i>Kickxia elatine</i> (L.) Dumort. Luxembourg: Colmar-Berg: Brosiushaff. Steinbach Corinne 14 Aug 2009.	LU-0-LUX-2010-013	W
39	<i>Kickxia spuria</i> (L.) Dumort. Luxembourg: Rodenbourg: Stirekopp. Frankenberg Thomas 17 Aug 2009.	LU-0-LUX-2010-014	W
40	<i>Lathyrus tuberosus</i> L. Luxembourg: Rodenbourg: Stirekopp. Frankenberg Thomas 17 Aug 2009.	LU-0-LUX-2010-015	W
41	<i>Legousia speculum-veneris</i> (L.) Chaix Luxembourg: Sandweiler: Heed. Owaller Marc 18 Aug 2009.	LU-0-LUX-2010-016	W
42	<i>Legousia speculum-veneris</i> (L.) Chaix Luxembourg: Sandweiler: An de Braaken. Owaller Marc 18 Aug 2009.	LU-0-LUX-2010-017	W
43	<i>Ligustrum vulgare</i> L. Luxembourg: Imbringen: Amberknepchen. Helminger Thierry 24 Aug 2009.	LU-0-LUX-2010-038	W
44	<i>Linum catharticum</i> L. Luxembourg: Imbringen: Amberknëppchen. Steinbach Corinne 27 Aug 2009.	LU-0-LUX-2010-018	W
45	<i>Lonicera xylosteum</i> L. Luxembourg: Colmar-Berg: Roudekapp. Hesse Yvan 20 Jul 2009.	LU-0-LUX-2010-019	W
46	<i>Lycopus europaeus</i> L. Luxembourg: Frisange: Rauschel. Frankenberg Thomas 1 Sep 2009.	LU-0-LUX-2010-020	W
47	<i>Lythrum salicaria</i> L. Luxembourg: Liefrange - bord étang. Glesener Bob 3 Oct 2010.	LU-0-LUX-2010-119	W
48	<i>Matricaria maritima</i> L. Luxembourg: Rodenbourg: Stirekopp. Frankenberg Thomas 17 Aug 2009.	LU-0-LUX-2010-021	W
49	<i>Melampyrum arvense</i> L. Luxembourg: Niederanven: Järheck. Steinbach Corinne 14 Aug 2009.	LU-0-LUX-2010-022	W

50	<i>Melampyrum arvense</i> L. Luxembourg: Bech - Lilien/ënner dem Jakobsbiërg, Talus sud CR 138, entre haie et champs - some 15 individuals. Pfeiffenschneider, Manou 25 Aug 2010.	LU-0-LUX-2010-090	W
51	<i>Menyanthes trifoliata</i> L. Luxembourg: Derenbach - Welschend. Owallèr Marc 20 Jul 2010.	LU-0-LUX-2010-091	W
52	<i>Meum athamanticum</i> Jacq. Luxembourg: Huldange - Navelbiërg. Owallèr Marc 9 Sep 2010.	LU-0-LUX-2010-092	W
53	<i>Molinia arundinacea</i> Schrank Luxembourg: Ernster: Wurzelswiss. Glesener Bob 14 Oct 2009.	LU-0-LUX-2010-023	W
54	<i>Myosurus minimus</i> L. Luxembourg: Rodenbourg: Pluchenwiss. Frankenberg Thomas 18 Jun 2009.	LU-0-LUX-2010-024	W
55	<i>Narcissus pseudonarcissus</i> L. Luxembourg: Lellingen - Op Baerel. Owallèr Marc 28 May 2010.	LU-0-LUX-2010-093	W
56	<i>Ononis spinosa</i> L. Luxembourg: Oberanven - Aarnesch. Owallèr Marc 10 Aug 2010.	LU-0-LUX-2010-094	W
57	<i>Parietaria judaica</i> L. Luxembourg: Luxembourg - Grund. Owallèr Marc 17 Sep 2010.	LU-0-LUX-2010-095	W
58	<i>Pedicularis palustris</i> L. Luxembourg: Junglinster-Godbrange - Weier. Owallèr Marc 30 Jun 2010.	LU-0-LUX-2010-096	W
59	<i>Petrorhagia prolifera</i> (L.) P.W.Ball & Heywood Luxembourg: Esch-Alzette: Leisebiërg. Steinbach Corinne 14 Aug 2009.	LU-0-LUX-2010-025	W
60	<i>Petrorhagia prolifera</i> (L.) P.W.Ball & Heywood Luxembourg: Esch-Alzette: Eisekaul. Steinbach Corinne 9 Sep 2009.	LU-0-LUX-2010-026	W
61	<i>Pimpinella saxifraga</i> L. Luxembourg: Imbringen: Amberkneppchen. Steinbach Corinne 27 Aug 2009.	LU-0-LUX-2010-027	W
62	<i>Pimpinella saxifraga</i> L. Luxembourg: Luxembourg - Polfermillen. Owallèr Marc 26 Aug 2010.	LU-0-LUX-2010-097	W
63	<i>Plantago major</i> L. Luxembourg: Niederanven: Iesel. Steinbach Corinne 14 Aug 2009.	LU-0-LUX-2010-028	W
64	<i>Polemonium caeruleum</i> L. Luxembourg: Koedange - Nei Schmelz, 46 Kapseln (albino), 11 Individuals. Steinbach Corinne 18 Aug 2010.	LU-0-LUX-2010-098	W
65	<i>Potentilla erecta</i> (L.) Raeusch. Luxembourg: Junglinster-Godbrange - Weier. Owallèr Marc 10 Aug 2010.	LU-0-LUX-2010-099	W
66	<i>Potentilla erecta</i> (L.) Raeusch. Luxembourg: Wilwerdange - Conzefenn. Owallèr Marc 9 Sep 2010.	LU-0-LUX-2010-100	W
67	<i>Potentilla rupestris</i> L. Luxembourg: Lellingen - Op Baerel/Planzewee. Owallèr Marc 1 Jul 2010.	LU-0-LUX-2010-101	W
68	<i>Primula veris</i> L. Luxembourg: Godbrange - Scheddelbiërg. Owallèr Marc 9 Jul 2010.	LU-0-LUX-2010-102	W
69	<i>Prunella laciniata</i> (L.) L. Luxembourg: Oberanven - Aarnesch. Owallèr Marc 10 Aug 2010.	LU-0-LUX-2010-103	W
70	<i>Prunella laciniata</i> (L.) L. Luxembourg: Walferdange: Helmsange – Sonnebiërg. Owallèr Marc 26 Aug 2010.	LU-0-LUX-2010-104	W
71	<i>Pulsatilla vulgaris</i> Mill. Luxembourg: Moersdorf - Deiwelskopp. Owallèr Marc 25 May 2010.	LU-0-LUX-2010-105	W
72	<i>Pulsatilla vulgaris</i> Mill. Luxembourg: Lellingen - Op Baerel/Versant. Owallèr Marc s.n. 28 May 2010.	LU-0-LUX-2010-106	W
73	<i>Ranunculus sceleratus</i> L. Luxembourg: Niederanven: Weschbrillchen. Steinbach Corinne 17 Sep 2009.	LU-0-LUX-2010-029	W

74	Rhinanthus minor L. Luxembourg: Imbringen: Amberkneppchen. Helminger Thierry 24 Aug 2009.	LU-0-LUX-2010-039	W
75	Rhinanthus minor L. Luxembourg: Flaxweiler - Hiirden. Owaller Marc 29 Jun 2010.	LU-0-LUX-2010-107	W
76	Rhinanthus minor L. Luxembourg: Junglinster - Mouzeknapp. Owaller Marc 29 Jun 2010.	LU-0-LUX-2010-108	W
77	Rhinanthus minor L. Luxembourg: Nommern - Bakes. Glesener Bob 9 Jul 2010.	LU-0-LUX-2010-109	W
78	Schoenoplectus tabernaemontani (C.C.Gmel.) Palla Luxembourg: Koedange - Wanteschbiereg. Owaller Marc 30 Jun 2010.	LU-0-LUX-2010-111	W
79	Schoenoplectus tabernaemontani (C.C.Gmel.) Palla Luxembourg: Junglinster-Godbrange - Weier. Owaller Marc 30 Jun 2010.	LU-0-LUX-2010-110	W
80	Sedum sexangulare L. Luxembourg: Ehnen - Mur en bord de la N10. Owaller Marc 10 Sep 2010.	LU-0-LUX-2010-112	W
81	Senecio nemorensis L. Luxembourg: Masseler: Im Thiergarten. Hesse Yvan 28 Sep 2009.	LU-0-LUX-2010-030	W
82	Senecio viscosus L. Luxembourg: Kirchberg, surfaces en gravier le long de l'avenue Kennedy. 49.6349°N, 6.1759°E. Helminger Thierry 7 Oct 2010.	LU-0-LUX-2010-157	W
83	Seseli annuum L. Luxembourg: Strassen: Tennebiereg, N Gaaschtgronn. Pol Faber 10 Oct 2009.	LU-0-LUX-2010-073	W
84	Seseli annuum L. Luxembourg: Luxembourg - Polfermillen. Owaller Marc 26 Aug 2010.	LU-0-LUX-2010-113	W
85	Seseli annuum L. Luxembourg: Luxembourg - Polfermillen, max. 6 individuals. Owaller Marc 1 Oct 2010.	LU-0-LUX-2010-114	W
86	Sherardia arvensis L. Luxembourg: Colmar-Berg: Brosiushaff. Steinbach Corinne 14 Aug 2009.	LU-0-LUX-2010-031	W
87	Silene armeria L. Luxembourg: Goebelsmühle, falaises bord de route. Glesener Bob 1 Oct 2010.	LU-0-LUX-2010-123	W
88	Sorbus aucuparia L. Luxembourg: Colmar-Berg: Roudekapp. Hesse Yvan 20 Jul 2009.	LU-0-LUX-2010-032	W
89	Spergula arvensis L. Luxembourg: Sandweiler: Heed. Marc Ovaller 18 Aug 2009.	LU-0-LUX-2010-033	W
90	Stachys arvensis (L.) L. Luxembourg: Colmar-Berg: Brosiushaff. Steinbach Corinne 14 Aug 2009.	LU-0-LUX-2010-034	W
91	Thymus pulegioides L. Luxembourg: Imbringen: Amberkneppchen. Helminger Thierry 24 Aug 2009.	LU-0-LUX-2010-041	W
92	Thymus pulegioides L. Luxembourg: Strassen - Gaaschtgronn, Owaller Marc 16 Sep 2010.	LU-0-LUX-2010-115	W
93	Thymus pulegioides L. Luxembourg: Strassen - Gaaschtgronn, Owaller Marc 16 Sep 2010.	LU-0-LUX-2010-115	W
94	Trifolium arvense L. Luxembourg: Brameschaff/Kehlen: Viischte Knapp. Steinbach Corinne 8 Oct 2009.	LU-0-LUX-2010-035	W
95	Trifolium fragiferum L. Luxembourg: Imbringen: Amberkneppchen. Helminger Thierry 24 Aug 2009.	LU-0-LUX-2010-043	W
96	Valerianella dentata (L.) Pollich Luxembourg: Colmar-Berg: Carelshaff. Steinbach Corinne 21 Jul 2009.	LU-0-LUX-2010-036	W
97	Verbascum lychnitis L. Luxembourg: Urspelt - Talus CFL. Owaller Marc 23 Sep 2010.	LU-0-LUX-2010-117	W

### Origin of the seeds

The seeds are the result of open pollination. They come from the collections of the Kirchberg Arboretum, and from the natural stand.

### Taxonomy:

The nomenclature is based on

Encke, F., G. Buchheim & S. Seybold. 1994. Zander. Handbuch der Pflanzennamen. (15. Aufl.). Stuttgart: Ulmer.

Lambinon, J., et al. 2004. Nouvelle Flore de la Belgique, du G-D de Luxembourg, du Nord de la France et des régions voisines. (Ptéridophytes et Spermatophytes). (5ème éd.). Meise: Éditions du Patrimoine du Jardin Botanique National de Belgique.

Roloff, A. & A. Bärtels. 1996. Gehölze. Bestimmung, Herkunft und Lebensbereiche, Eigenschaften und Verwendung. Stuttgart: Ulmer.

Timmermann, G. & T. Müller. 1994. Wildrosen und Weissdorne Mitteleuropas. Landschaftsgerechte Sträucher und Bäume. (2. Aufl.). Stuttgart: Verlag des Schwäbischen Albvereins.

### Title page:

Melampyrum arvense, Luxembourg, Roodt-Syre. Widdebiery. Foto: Bob Glesener, 2006.

## **Agreement on the supply of living plant material<sup>1</sup> for non-commercial purposes leaving the International Plant Exchange Network**

Against the background of the provisions and decisions of the Convention on Biological Diversity of 1992 (CBD) and in particular those on access to genetic resources and benefit-sharing, the Musée national d'histoire naturelle, Luxembourg (MnhnL) is dedicated to promoting the conservation, sustainable use, and research of biological diversity. The MnhnL therefore expects its partners in acquiring, maintaining, and transferring plant material to always act in accordance with the CBD and the Convention on the International Trade in Endangered Species (CITES). The responsibility for legal handling of the plant material passes on to the recipient upon receipt of the material. The requested plant material will be supplied to the recipient only on the following conditions:

1. Based on this agreement, the plant material is supplied only for non-commercial use such as scientific study and educational purposes as well as environmental protection. Should the recipient at a later date intend a commercial use or a transfer for commercial use, the country of origin's prior informed consent (PIC) must be obtained in writing before the material is used or transferred. The recipient is responsible for ensuring an equitable sharing of benefits.
2. On receiving the plant material, the recipient endeavours to document the received plant material, its origin (country of origin, first receiving garden, „donor“ of the plant material, year of collection) as well as the acquisition and transfer conditions in a comprehensible manner.
3. In the event that scientific publications are produced based on the supplied plant material, the recipient is obliged to indicate the origin of the material (the supplying garden and if known the country of origin) and to send these publications to the MnhnL and to the country of origin without request.
4. On request, the MnhnL will forward relevant information on the transfer of the plant material to the body charged with implementing the CBD<sup>2</sup>.
5. The recipient may transfer the received plant material to third parties only under these terms and conditions and must document the transfer in a suitable manner (e.g. by using the documentation form, such as provided in Annex 1.3).

---

I accept the above conditions.

Date, Signature

Recipient's name and address, stamp

<sup>1</sup> According to the CBD "genetic resources" means genetic material of actual or potential value. This definition covers both living and not living material. The Code of Conduct and the IPEN covers only the exchange of living plant material (living plants or parts of plants, diaspores) thus falling in the definition of genetic resources.

<sup>2</sup> ideally, the national focal point in the garden's home country

please return before 30. April 2011 to: Musée national d'histoire naturelle  
Living plant collections  
25, rue Münster  
L-2160 Luxembourg

IPEN members only may also send their order by email or fax: email: arboretum@mnhn.lu  
fax: +352 46 38 48

**DESIDERATA** (max 20 items please):

1	2	3	4	5	6	7	8	9	10
11	12	13	14	15	16	17	18	19	20
21	22	23	24	25	26	27	28	29	30
31	32	33	34	35	36	37	38	39	40
41	42	43	44	45	46	47	48	49	50
51	52	53	54	55	56	57	58	59	60
61	62	63	64	65	66	67	68	69	70
71	72	73	74	75	76	77	78	79	80
81	82	83	84	85	86	87	88	89	90
91	92	93	94	95	96	97			

IPEN member?                      YES                      NO

**IMPORTANT NOTE: Non IPEN members have to return the agreement on the previous page signed by an entitled representative of their institution before we can provide seeds to them!**

YOUR ADDRESS: \_\_\_\_\_  
\_\_\_\_\_  
\_\_\_\_\_  
\_\_\_\_\_  
\_\_\_\_\_