



Musée national
d'histoire naturelle
Luxembourg

Index Seminum 2008

Seeds collected in 2008, offered for exchange by

ARBORETUM KIRCHBERG



<http://www.mnhn.lu/arboretum>

WANSELER KRAIDERGAART

Medicinal plant conservatory garden Winseler

Geographic location: latitude 49° 58' N, longitude 05° 53' E, altitude 345 m.

The medicinal plant garden (2500 sqmeters), completed in 1997 in Winseler in the northouest of the country, shows some 380 taxa ordered according to different themes, e.g. scent garden, pest control plants, toxic plants, plants for industrial use, and foremost popular medicinal plants.

The garden is open daily from 2-6 pm, from 29 June to 15 September.

contact: Conservatoire de plantes médicinales de Winseler a.s.b.l.
35, Duerfstrooss
L-9696 Winseler
email: tkraider@pt.lu

Germany

Luxembourg

ARBORETUM KIRCHBERG

Collection of hardy trees and shrubs from Europe and adjacent regions

Geographic location: latitude 49° 37' N, longitude 06° 09' E, altitude 350 m.

Aiming to present a most complete collection of hardy trees and shrubs from Europe, the arboretum, initiated in 1993 by the public *Fonds d'Urbanisation et d'Aménagement du Plateau de Kirchberg* right to the northeast of the city of Luxembourg, consists of 3 main sites with a total area of nearly 30 ha, open to public throughout the year.

contact: Thierry Helminger Musée national d'histoire naturelle
Living plant collections
25 rue Münster
L-2160 Luxembourg

tel +352 46 22 40 201, fax +352 46 38 48, email:arboretum@mnhn.lu

Climatic data: Luxembourg's climate is temperate and humid, the average yearly mean temperature is 9.0 °C, the average yearly precipitation is 782.2 mm (1951-1990, STATEC). Average number of frost days per year: 89

Average mean monthly values for temperature and precipitation

(Luxembourg-Findel, 1961-1990)

	J	F	M	A	M	J	J	A	S	O	N	D
C°	0	1.1	4	7.5	11.8	14.9	16.9	16.4	13.4	9.1	3.8	1
mm	71.2	61.7	70	61.2	81.2	82.2	68.4	72.3	70	74.6	83.2	79.6

Regulations on the exchange of living plant material:

As part of their commitment to implement the provisions of the International Convention on Biological Diversity (Rio de Janeiro, 1992), especially article 15 (access to genetic resources), the Musée national d'histoire naturelle in Luxembourg is a member of the International Plant Exchange Network (IPEN) and provides plant material only in accordance with the IPEN Code of Conduct. The full text of the Code can be found at <http://www.mnhn.lu/arboretum>

Therefore our gardens can only supply plant material to non IPEN-members after reception of the bilateral Material Transfer Agreement signed a by an entitled representant of the recieving institution.

IPEN members don't need to sign the Material Transfer Agreement. (see list at <http://www.bgci.org/abs/ipen>)

The IPEN number given with the seed names consists of the following positions:

AA-0-LUX-9999-999

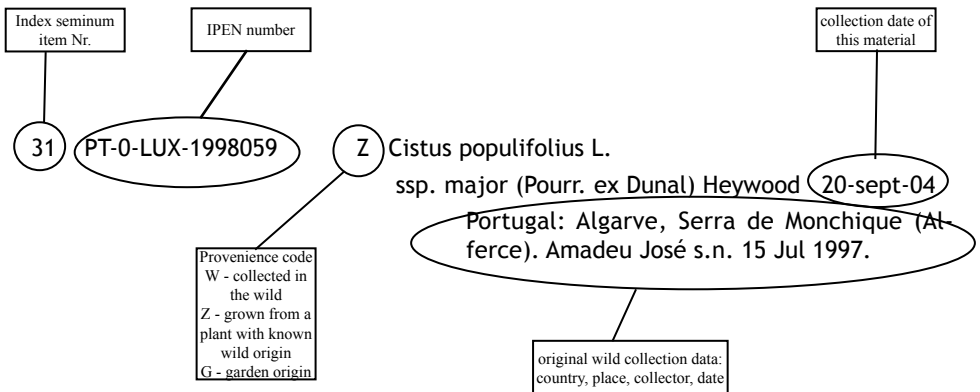
AA = ISO country code of the country of origin of this plant material, XX = unknown

0 = no special restrictions regarding exchange (or 1 if there are such restrictions)

LUX = abbreviation of our institution

9999-999 (or 9999/AA/999) = our accession number

The IPEN number as a whole must always stay attached to the accession and its descendants so that the origin of the material can always be traced back!



SEED LIST 2008

- | | | | | |
|----|--|---|---|------------|
| 1 | LU-0-LUX-2008-065 | W | <i>Agrimonia eupatoria</i> L. | 09.10.2008 |
| | Luxembourg: Nommern, Bakes. Steinbach, Corinne s.n. 10 Oct 2008. | | | |
| 2 | LU-0-LUX-2008-066 | W | <i>Asparagus officinalis</i> L. | 26.09.2008 |
| | Luxembourg: Luxembourg (Ville): Kirchberg, Kuebebiert. Steinbach, Corinne s.n. 26 Sep 2008. | | | |
| 3 | LU-0-LUX-2008-067 | W | <i>Atropa bella-donna</i> L. | 24.09.2008 |
| | Luxembourg: Kayl, Kalebiert (Haard). Steinbach, Corinne s.n. 24 Sep 2008. | | | |
| 4 | LU-0-LUX-2008-133 | W | <i>Berberis vulgaris</i> L. | 26.09.2008 |
| | Luxembourg: Clausen, Würthsberg, falaises surplombant la vallée. Helminger, Thierry s.n. 26 Sep 2008. | | | |
| 5 | LU-0-LUX-2008-129 | W | <i>Berberis vulgaris</i> L. | 16.09.2008 |
| | Luxembourg: Pfaffenthal, au pied des fortifications du Fort Th„ngen par le chemin pédestre montant de la rue Wilhelm. Helminger, Thierry s.n. 16 Sep 2008. | | | |
| 6 | LU-0-LUX-2008-068 | W | <i>Berberis vulgaris</i> L. | 16.09.2008 |
| | Luxembourg: Imbringen, Amberkneppchen. Steinbach, Corinne s.n. 16 Sep 2008. | | | |
| 7 | LU-0-LUX-2008-069 | W | <i>Bupleurum falcatum</i> L. | |
| | Luxembourg: Niederanven, Aarnesch. Steinbach, Corinne s.n. 9 Oct 2008. | | | |
| 8 | LU-0-LUX-2008-135 | W | <i>Calamagrostis epigejos</i> (L.) Roth | 26.09.2008 |
| | Luxembourg: Luxembourg (Ville): Arboretum Kirchberg, Park Klosegrännchen, KL-D7, spontaneous on sandy grassland. Helminger, Thierry s.n. 26 Sep 2008. | | | |
| 9 | LU-0-LUX-2008-064 | W | <i>Calluna vulgaris</i> (L.) Hull | 05.11.2008 |
| | Luxembourg: Nospelt: Telpeschholz. Steinbach, Corinne s.n. 5 Nov 2008. | | | |
| 10 | KG-0-LUX-1999029 | Z | <i>Caragana turkestanica</i> Kom. | 26.09.2008 |
| | Kyrgyzstan: Tianshan, jugum Sussamyrense, in fluxu medio fl. Tschitschkan, confl. Tschon-Arym. ca 1700-2000 m. s.n. 1 Jul 1971. | | | |
| 11 | LU-0-LUX-2008-071 | W | <i>Carlina vulgaris</i> L. | 22.09.2008 |
| | Luxembourg: Moersdorf, Déiwelskopp. Owaller, Marc s.n. 22 Sep 2008. | | | |
| 12 | XX-0-LUX-2000-134 | G | <i>Cistus albanicus</i> E.F. Warb. ex Heyw. | 29.09.2008 |
| | Austria: BG Graz. s.n. 1 Jul 1999. | | | |
| 13 | PT-0-LUX-2006-151 | G | <i>Cistus albidus</i> L. | 29.09.2008 |
| | Portugal. s.n. 1 Jul 2004. | | | |
| 14 | FR-0-LUX-2002-015 | Z | <i>Cistus crispus</i> L. | 29.09.2008 |
| | France: Aude: Fabrezan. s.n. 1 Jul 1996. | | | |
| 15 | IT-0-LUX-2002-088 | Z | <i>Cistus incanus</i> L. | 29.09.2008 |
| | Italy: Marina di Grosseto (Grosseto), macchia. 3 m. F. Mensini s.n. 20 Jun 2001. | | | |
| 16 | IT-0-LUX-2006-113 | Z | <i>Cistus monspeliensis</i> L. | 29.09.2008 |
| | Italy: Siena: Valianino, Vescovado di Murlo. 263 m. F. Mensini, F. Romi s.n. 14 Jul 2005. | | | |

- 17 PT-0-LUX-1998059 Z *Cistus populifolius* L.
ssp. *major* (Pourr. ex Dunal) Heyw. 29.09.2008
Portugal: Algarve, Serra de Monchique (Alferce). Amadeu José s.n. 15 Jul 1997.
- 18 PT-0-LUX-1998060 Z *Cistus psilosepalus* Sweet 29.09.2008
Portugal: Alto Alentejo, Marvão (Portagem). Amadeu José s.n. 15 Aug 1997.
- 19 LU-0-LUX-2008-072 W *Clinopodium vulgare* L. 16.09.2008
Luxembourg: Ermsdorf: Hossenberg. Steinbach, Corinne s.n. 16 Sep 2008.
- 20 LU-0-LUX-2008-134 W *Convallaria majalis* L. 26.09.2008
Luxembourg: Luxembourg (Ville): Clausen, Würthsberg, sousbois le long du chemin longeant les falaises surplombant la vallée. Helminger, Thierry s.n. 26 Sep 2008.
- 21 LU-0-LUX-2008-073 W *Cornus mas* L. 22.09.2008
Luxembourg: Moersdorf, Déiwelskopp. Owaller, Marc s.n. 22 Sep 2008.
- 22 XX-0-LUX-1996031 Z *Cotoneaster nebrodensis* (Guss.) K.Koch 29.09.2008
s.n. 1 Jul 1995.
- 23 LU-0-LUX-2008-074 W *Crataegus monogyna* Jacq. 26.09.2008
Luxembourg: Fentange, Eisenbahndreieck. Pfeiffenschneider, Manou s.n. 26 Sep 2008.
- 24 LU-0-LUX-2008-075 W *Daphne mezereum* L. 22.09.2008
Luxembourg: Moersdorf, Déiwelskopp. Owaller, Marc s.n. 22 Sep 2008.
- 25 LU-0-LUX-2008-131 W *Dianthus carthusianorum* L. 16.09.2008
Luxembourg: Luxembourg (Ville): Pfaffenthal, Montée au N de la rue des Trois Glands, bord de chemin. Helminger, Thierry s.n. 16 Sep 2008.
- 26 LU-0-LUX-2008-076 W *Dianthus deltoides* L. 26.09.2008
Luxembourg: Nospelt, Telpesch Holz. Steinbach, Corinne s.n. 26 Sep 2008.
- 27 LU-0-LUX-2008-130 W *Diplotaxis tenuifolia* (L.) DC. 16.09.2008
Luxembourg: Luxembourg (Ville): Pfaffenthal, le long du chemin pédestre montant de la rue Wilhelm vers les fortifications du Fort Th,,ngen. Helminger, Thierry s.n. 16 Sep 2008.
- 28 LU-0-LUX-2008-126 W *Echium vulgare* L. 26.09.2008
Luxembourg: Luxembourg (Ville): Arboretum Kirchberg, Park Klosgrënnchen, KL-D7, spontaneous on sandy soil. ca 300 m. Helminger, Thierry s.n. 26 Sep 2008.
- 29 LU-0-LUX-2008-077 W *Euonymus europaea* L. 16.09.2008
Luxembourg: Berchem, Uelzechtwisen. Steinbach, Corinne s.n. 16 Sep 2008.
- 30 LU-0-LUX-2008-078 W *Euonymus europaea* L. 26.09.2008
Luxembourg: Huensdorf, Uelzecht. Pfeiffenschneider, Manou s.n. 26 Sep 2008.
- 31 LU-0-LUX-2008-079 W *Euonymus europaea* L. 22.09.2008
Luxembourg: Moersdorf, Déiwelskapp. Owaller, Marc s.n. 22 Sep 2008.
- 32 LU-0-LUX-2008-080 W *Euonymus europaea* L. 26.09.2008
Luxembourg: Luxembourg (Ville), Kuebibiërg. Steinbach, Corinne s.n. 26 Sep 2008.
- 33 LU-0-LUX-2008-081 W *Eupatorium cannabinum* L. 24.09.2008
Luxembourg: Kayl, Kalebiërg. Steinbach, Corinne s.n. 24 Sep 2008.

- 34 LU-0-LUX-2008-132 W *Festuca longifolia* Thuill.
ssp. *pseudocostei* Auquier 16.09.2008
Luxembourg: Luxembourg (Ville): Pfaffenthal, Montée au N de la rue des
Trois Glands, bord de chemin. Helminger, Thierry s.n. 16 Sep 2008.
- 35 LU-0-LUX-2008-082 W *Filago minima* (Sm.) Pers. 26.09.2008
Luxembourg: Nospelt, Telpech Holz. Steinbach, Corinne s.n. 26 Sep 2008.
- 36 LU-0-LUX-2008-083 W *Frangula alnus* Mill. 26.09.2008
Luxembourg: Nospelt, Telpech Holz. Steinbach, Corinne s.n. 26 Sep 2008.
- 37 FR-0-LUX-1998030 Z *Genista tinctoria* L. 19.09.2008
France: Nantes, HB: Loire-Atlantique, Saint-Géréon, "Moulin d'Ombledpié",
spontaneous. s.n. 1 Jul 1994.
- 38 LU-0-LUX-2008-086 W *Gentiana germanica* Willd. 09.10.2008
Luxembourg: Nommern, Bakes. Steinbach, Corinne s.n. 9 Oct 2008.
- 39 LU-0-LUX-2008-084 W *Gentiana germanica* Willd. 09.10.2008
Luxembourg: Niederanven, Aarnescht, Plateau. Steinbach, Corinne s.n. 9 Oct
2008.
- 40 LU-0-LUX-2008-085 W *Gentiana germanica* Willd. 09.10.2008
Luxembourg: Niederanven, Aarnescht. Steinbach, Corinne s.n. 9 Oct 2008.
- 41 LU-0-LUX-2008-087 W *Hypericum perforatum* L. 26.09.2008
Luxembourg: Nospelt, Telpesch Holz. Steinbach, Corinne s.n.
- 42 LU-0-LUX-2008-088 W *Inula salicina* L. 16.09.2008
Luxembourg: Nommern, Bakes. Steinbach, Corinne s.n. 16 Sep 2008.
- 43 LU-0-LUX-2008-089 W *Ligustrum vulgare* L. 16.09.2008
Luxembourg: Imbringen, Amberknepchen. Steinbach, Corinne s.n. 16 Sep
2008.
- 44 LU-0-LUX-2008-090 W *Ligustrum vulgare* L. 10.10.2008
Luxembourg: Junglinster, Mouzeknapp. Pfeiffenschneider, Manou s.n. 10 Oct
2008.
- 45 LU-0-LUX-2008-091 W *Ligustrum vulgare* L. 16.09.2008
Luxembourg: Nommern, Bakes. Steinbach, Corinne s.n. 16 Sep 2008.
- 46 LU-0-LUX-2008-092 W *Peucedanum cervaria* (L.) Lapeyr. 09.10.2008
Luxembourg: Niederanven, Aarnescht. Steinbach, Corinne s.n. 9 Oct 2008.
- 47 LU-0-LUX-2008-093 W *Rhamnus cathartica* L. 16.09.2008
Luxembourg: Imbringen, Amberknepchen. Steinbach, Corinne s.n. 16 Sep
2008.
- 48 LU-0-LUX-2008-094 W *Rhamnus cathartica* L. 16.09.2008
Luxembourg: Nommern, Bakes. Steinbach, Corinne s.n. 16 Sep 2008.
- 49 LU-0-LUX-2008-095 W *Rosa arvensis* Huds. 03.10.2008
Luxembourg: Bettembourg Richtung échangeur Hellange, bei de Weieren.
Steinbach, Corinne s.n. 3 Oct 2008.
- 50 LU-0-LUX-2008-097 W *Rosa canina* L. ssp. *canina* 03.10.2008
Luxembourg: Berchem, Gréiss. Steinbach, Corinne s.n. 3 Oct 2008.
- 51 LU-0-LUX-2008-098 W *Rosa micrantha* Borrer ex Sm. 09.10.2008
Luxembourg: Nommern, Bakes. Steinbach, Corinne s.n. 9 Oct 2008.
- 52 LU-0-LUX-2008-099 W *Rosa micrantha* Borrer ex Sm. 06.10.2008
Luxembourg: Steinsel. Steinbach, Corinne s.n. 6 Oct 2008.

- 53 LU-0-LUX-2008-128 W *Rosa pseudocabriuscula*
(R. Keller) Henker & G. Schulze 16.09.2008
Luxembourg: Luxembourg (Ville): Clausen, Würthsberg, falaises surplombant
la vallée. Helminger, Thierry s.n. 16 Sep 2008.
- 54 LU-0-LUX-2008-100 W *Rosa rubiginosa* L. 24.09.2008
Luxembourg: Basbellain. Owall, Marc s.n. 24 Sep 2008.
- 55 LU-0-LUX-2008-101 W *Rosa rubiginosa* L. 16.09.2008
Luxembourg: Imbringen, Amberkneppchen. Steinbach, Corinne s.n. 16 Sep
2008.
- 56 LU-0-LUX-2008-104 W *Rosa rubiginosa* L. 06.10.2008
Luxembourg: Steinsel. Steinbach, Corinne s.n. 6 Oct 2008.
- 57 LU-0-LUX-2008-110 W *Rosa subcanina* (H.Christ)
Dalla Torre & Sarnth. 10.10.2008
Luxembourg: Winseler, Grumelscheid, Mittefeld. Pfeiffenschneider, Manou
s.n. 10 Oct 2008.
- 58 LU-0-LUX-2008-108 W *Rosa subcanina* (H.Christ)
Dalla Torre & Sarnth. 10.10.2008
Luxembourg: Ernster, Warschent. Pfeiffenschneider, Manou s.n. 10 Oct
2008.
- 59 LU-0-LUX-2008-109 W *Rosa subcanina* (H.Christ)
Dalla Torre & Sarnth. 10.10.2008
Luxembourg: Winorange, Krält. Pfeiffenschneider, Manou s.n. 10 Oct 2008.
- 60 LU-0-LUX-2008-106 W *Rosa subcanina* (H.Christ)
Dalla Torre & Sarnth. 10.10.2008
Luxembourg: Junglinster, Mouzeknapp. Pfeiffenschneider, Manou s.n. 10 Oct
2008.
- 61 LU-0-LUX-2008-105 W *Rosa subcanina* (H.Christ)
Dalla Torre & Sarnth. 10.10.2008
Luxembourg: Ernster, Fëschbësch. Pfeiffenschneider, Manou s.n. 10 Oct
2008.
- 62 LU-0-LUX-2008-107 W *Rosa subcanina* (H.Christ)
Dalla Torre & Sarnth. 10.10.2008
Luxembourg: Junglinster, Mouzeknapp. Pfeiffenschneider, Manou s.n. 10 Oct
2008.
- 63 LU-0-LUX-2008-111 W *Rosa subcollina* (H.Christ)
Dalla Torre & Sarnth. 26.09.2008
Luxembourg: Bigonville, Ale Kessel. Steinbach, Corinne s.n. 26 Sep 2008.
- 64 LU-0-LUX-2008-112 W *Rosa subcollina* (H.Christ)
Dalla Torre & Sarnth. 03.10.2008
Luxembourg: Luxembourg (Ville): Kockelscheuer, Hongerbruch. Steinbach,
Corinne s.n. 3 Oct 2008.
- 65 LU-0-LUX-2008-113 W *Rosa tomentella* Léman 24.09.2008
Luxembourg: Kayl, Leiffraechen. Steinbach, Corinne s.n. 24 Sep 2008.
- 66 LU-0-LUX-2008-127 W *Rosa tomentosa* Sm. 16.09.2008
Luxembourg: Luxembourg (Ville): Arboretum Kirchberg, Park Klosegrënnchen,
KL-Bö10, spontaneous hedge transplant. ca 300 m. Helminger, Thierry s.n.
16 Sep 2008.

- 67 LU-0-LUX-2008-115 W *Rosa tomentosa* Sm. 10.10.2008
Luxembourg: Wincrange/Niederwampach, Déidschleedchen. Pfeiffenschneider, Manou s.n. 10 Oct 2008.
- 68 LU-0-LUX-2008-114 W *Rosa tomentosa* Sm. 06.10.2008
Luxembourg: Steinsel. Steinbach, Corinne s.n. 6 Oct 2008.
- 69 LU-0-LUX-2008-118 W *Rosa villosa* L. 29.09.2008
Luxembourg: Wiltz, Lameschmillen, bord du CR 319. Owaller, Marc s.n. 29 Sep 2008.
- 70 LU-0-LUX-2008-119 W *Rosa villosa* L. 29.09.2008
Luxembourg: Wiltz, Lameschmillen, Hameau. Owaller, Marc s.n. 29 Sep 2008.
- 71 LU-0-LUX-2008-116 W *Rosa villosa* L. 25.09.2008
Luxembourg: Hautbellain, Fooschtbaach. Owaller, Marc s.n. 25 Sep 2008.
- 72 LU-0-LUX-2008-117 W *Rosa villosa* L. 06.10.2008
Luxembourg: Strassen, Beim Jongebësch. Steinbach, Corinne s.n.
- 73 LU-0-LUX-2008-120 W *Scabiosa columbaria* L. 09.10.2008
Luxembourg: Niederanven, Aarnescht. Steinbach, Corinne s.n. 9 Oct 2008.
- 74 LU-0-LUX-2008-121 W *Silaum silaus* (L.) Schinz & Thell. 16.09.2008
Luxembourg: Imbringen, Amberkneppchen. Steinbach, Corinne s.n. 16 Sep 2008.
- 75 LU-0-LUX-2008-122 W *Succisa pratensis* Moench 06.10.2008
Luxembourg: Nommern, Bakes. Auf der anderen Strassenseite, auf dem Feldweg. Steinbach, Corinne s.n. 6 Oct 2008.
- 76 LU-0-LUX-2008-123 W *Teucrium scorodonia* L. 26.09.2008
Luxembourg: Bigonville, Ale Kessel. Steinbach, Corinne s.n. 26 Sep 2008.
- 77 LU-0-LUX-2008-125 W *Trifolium dubium* Sibth. 26.09.2008
Luxembourg: Luxembourg (Ville): Arboretum Kirchberg, Park Klosgrënnchen, KL-D7, spontaneous on sandy soil. ca 300 m. Helminger, Thierry s.n. 26 Sep 2008.
- 78 XX-0-LUX-2000-185 U *Viburnum betulifolium* Batal. 29.09.2008
- 79 LU-0-LUX-2008-124 W *Viburnum opulus* L. 06.10.2008
Luxembourg: Medernach, Stakbur. Steinbach, Corinne s.n. 6 Oct 2008.
- 80 XX-0-LUX-2000-198 G *Zanthoxylum piperitum* DC. 29.09.2008

Agreement on the supply of living plant material¹ for non-commercial purposes leaving the International Plant Exchange Network

Against the background of the provisions and decisions of the Convention on Biological Diversity of 1992 (CBD) and in particular those on access to genetic resources and benefit-sharing, the Musée national d'histoire naturelle, Luxembourg (MnhnL) is dedicated to promoting the conservation, sustainable use, and research of biological diversity. The MnhnL therefore expects its partners in acquiring, maintaining, and transferring plant material to always act in accordance with the CBD and the Convention on the International Trade in Endangered Species (CITES). The responsibility for legal handling of the plant material passes on to the recipient upon receipt of the material. The requested plant material will be supplied to the recipient only on the following conditions:

1. Based on this agreement, the plant material is supplied only for non-commercial use such as scientific study and educational purposes as well as environmental protection. Should the recipient at a later date intend a commercial use or a transfer for commercial use, the country of origin's prior informed consent (PIC) must be obtained in writing before the material is used or transferred. The recipient is responsible for ensuring an equitable sharing of benefits.
2. On receiving the plant material, the recipient endeavours to document the received plant material, its origin (country of origin, first receiving garden, „donor“ of the plant material, year of collection) as well as the acquisition and transfer conditions in a comprehensible manner.
3. In the event that scientific publications are produced based on the supplied plant material, the recipient is obliged to indicate the origin of the material (the supplying garden and if known the country of origin) and to send these publications to the MnhnL and to the country of origin without request.
4. On request, the MnhnL will forward relevant information on the transfer of the plant material to the body charged with implementing the CBD².
5. The recipient may transfer the received plant material to third parties only under these terms and conditions and must document the transfer in a suitable manner (e.g. by using the documentation form, such as provided in Annex 1.3).

I accept the above conditions.

Date, Signature

Recipient's name and address, stamp

¹ According to the CBD "genetic resources" means genetic material of actual or potential value. This definition covers both living and not living material. The Code of Conduct and the IPEN covers only the exchange of living plant material (living plants or parts of plants, diaspores) thus falling in the definition of genetic resources.

² ideally, the national focal point in the garden's home country

please return before 30. April 2009 to: Musée national d'histoire naturelle
Living plant collections
25, rue Münster
L-2160 Luxembourg

IPEN members may also send their order by fax or email: fax: +352 46 38 48
email: arboretum@mnhn.lu

DESIDERATA (max 20 items please):

1	2	3	4	5	6	7	8	9	10
11	12	13	14	15	16	17	18	19	20
21	22	23	24	25	26	27	28	29	30
31	32	33	34	35	36	37	38	39	40
41	42	43	44	45	46	47	48	49	50
51	52	53	54	55	56	57	58	59	60
61	62	63	64	65	66	67	68	69	70
71	72	73	74	75	76	77	78	79	80

IPEN member? YES NO

IMPORTANT NOTE: Non IPEN members have to return the agreement on the previous page signed by an entitled representative of their institution before we can provide seeds to them!

YOUR ADDRESS: _____

Origin of the seeds

The seeds are the result of open pollination. They come from the collections of the Kirchberg Arboretum, and from the natural stand.

Taxonomy:

The nomenclature is based on

- Encke, F., G. Buchheim & S. Seybold. 1994. Zander. Handbuch der Pflanzennamen. (15. Aufl.). Stuttgart: Ulmer.
- Lambinon, J., et al. 2004. Nouvelle Flore de la Belgique, du G-D de Luxembourg, du Nord de la France et des régions voisines. (Ptéridophytes et Spermatophytes). (5ème éd.). Meise: Éditions du Patrimoine du Jardin Botanique National de Belgique.
- Roloff, A. & A. Bärtels. 1996. Gehölze. Bestimmung, Herkunft und Lebensbereiche, Eigenschaften und Verwendung. Stuttgart: Ulmer.
- Timmermann, G. & T. Müller. 1994. Wildrosen und Weissdorne Mitteleuropas. Landschaftsgerechte Sträucher und Bäume. (2. Aufl.). Stuttgart: Verlag des Schwäbischen Albvereins.

Title page:

Leaf of *Rubus rudis* Weihe Luxembourg. Foto: Th. Helminger.

